



Welcome to the Kwikset family!

This guide will get you ready to install your new lever.

If you have any issues, please visit our support center: kwikset.com/support or call us at 1-800-327-5625.

Installation and Reference Guide

**This manual can be used to install a variety of levers.
Please determine your function type prior to installation.**



Passage
(Hall/ Closet)



Privacy
(Bed/ Bath)

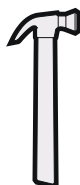


Entry
(Keyed)



Inactive
(Non-Rotating)

Recommended Tools



wood block

*Tools will depend on install type

[Door Prep: If you need help in preparing your door](#)
[Drilling template](#)

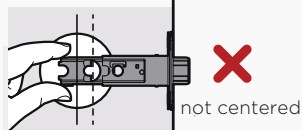
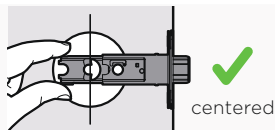
1 Adjust the backset of the latch (if needed)

- A Hold the latch in front of the door hole, with the latch face flush against the door edge.



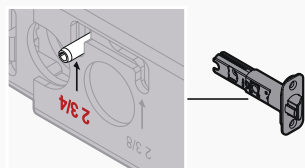
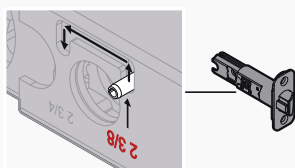
- B If the latch holes are centered in the door hole, no adjustment is required. Proceed to step 2.

If the latch holes are NOT centered, adjust latch. See “Latch Adjustment” (step 1C).



- C Latch Adjustment (only if needed)

Move the pin to extend the latch.

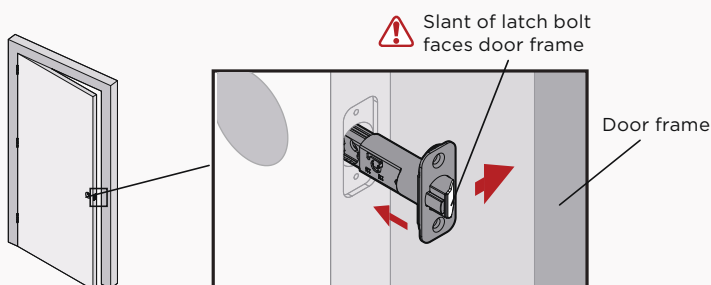


2 Install latch (chiseled door)

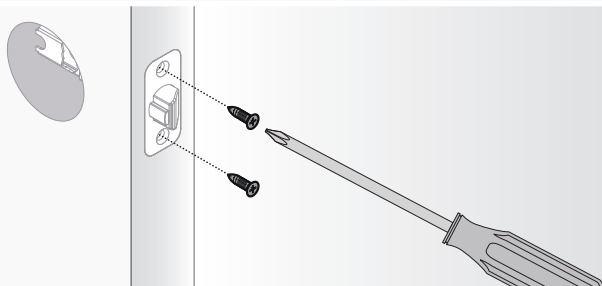
A



B



C



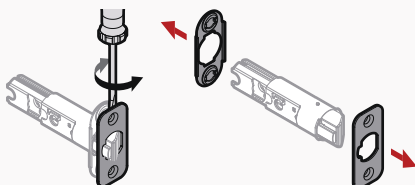
2 Install latch (non-chiseled door)

A



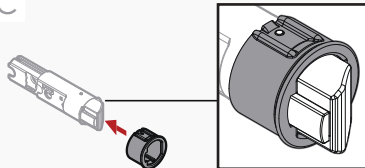
B

Remove plates



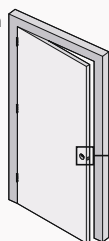
C

Install drive-in collar

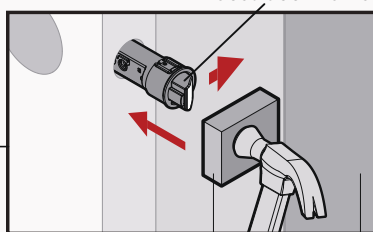


D

Use hammer and wood block to tap in latch without damaging it.



⚠ Slant of latch bolt faces door frame



Wood block Door frame

If screws are exposed, proceed to the next page.



If screws are concealed, proceed to page 5.



3

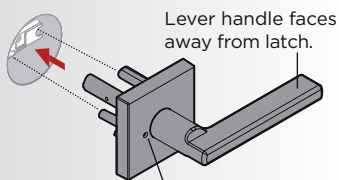
Install Passage, Privacy & Entry levers (exposed screws)

A

Press latch bolt to install lever.



IMPORTANT: If installing a passage lock on an entry door, make sure the lever without the screw holes is on the exterior side of the door.



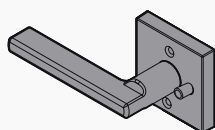
Lever handle faces away from latch.



Hole must be on the side for privacy levers.

Exterior

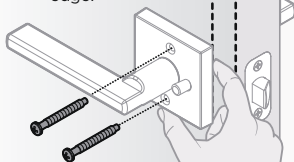
B



Interior

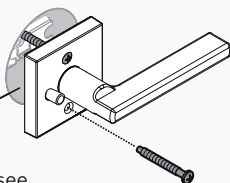
C

Keep parallel to the door edge.

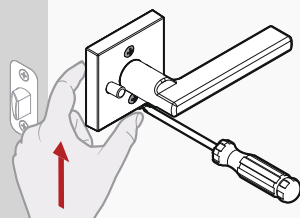


D

Tip: Pull lever slightly away from door to see where screws insert.



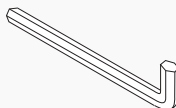
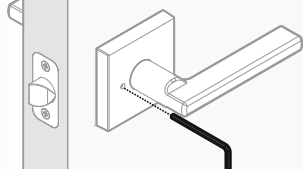
E



For Privacy Locks ONLY

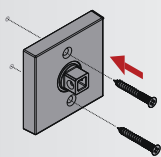


Save the bedroom/ bathroom emergency unlock tool for future use.

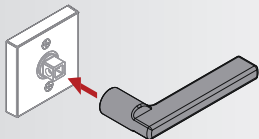


3 Install inactive (non-rotating) levers

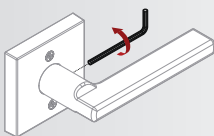
A



B

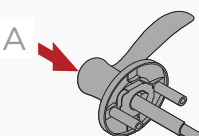


C



3 Install levers (concealed screws)

A

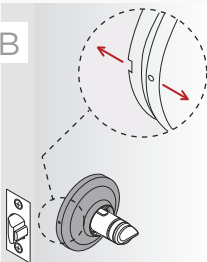


Push bolt to install exterior lever.



Interior

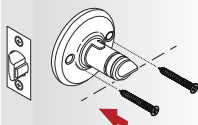
B



Interior

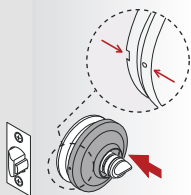
C

Keep turn button horizontal as shown.



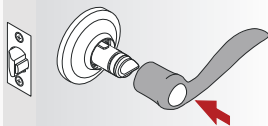
Interior

D



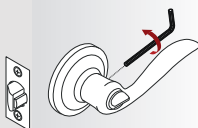
Interior

E



Interior

F

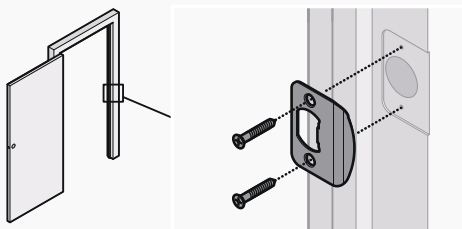


Interior

4

Install strike to door frame

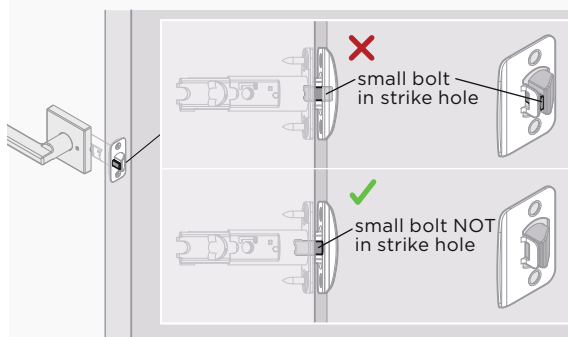
A



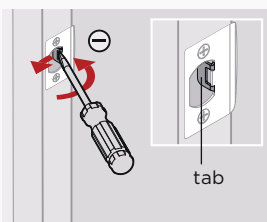
B

Close door, test latch operation and make adjustments as needed:

If small bolt of latch enters strike hole, reposition strike.



If latch is loose in the strike, adjust the strike tab so it grips the latch bolt better when the door is closed.



SmartKey Rekeying Instructions



SMARTKEY
SECURITY™

**ONE KEY
FOR ALL
YOUR LOCKS™**

Easily re-key
yourself

Reset tool
goes here



WITH PROTECTION AGAINST
ADVANCED BREAK-IN TECHNIQUES

The lock you can
re-key yourself in
seconds for any
situation, including:



**Recently
Moved**



**Lost
Keys**



**Multiple
Doors**



**Carry
Less Keys**

For rekeying instructions, you can also visit:

<https://www.kwikset.com/support/answers/how-to-re-key-your-smartkey-security-locks>

If you have any issues, please visit our
support center: [kwikset.com/support](https://www.kwikset.com/support)
or call us at 1-800-327-5625.



WARNING: This Manufacturer advises that no lock can provide complete security by itself. This lock may be defeated by forcible or technical means, or evaded by entry elsewhere on the property. No lock can substitute for caution, awareness of your environment, and common sense. Builder's hardware is available in multiple performance grades to suit the application. In order to enhance security and reduce risk, you should consult a qualified locksmith or other security professional.